

Section 1/100

The design takes away the facade. Standing on the street, the view to the inside is almost totally blocked. The same goes from the view from the inside to the outside. Still, there is no wall separating the two.

The whole entrance is a little track passing through different layers. The first obstruction is a low wall of 0,4m height and 0,4m depth. It's placed next to the street as to invite people to take a seat.

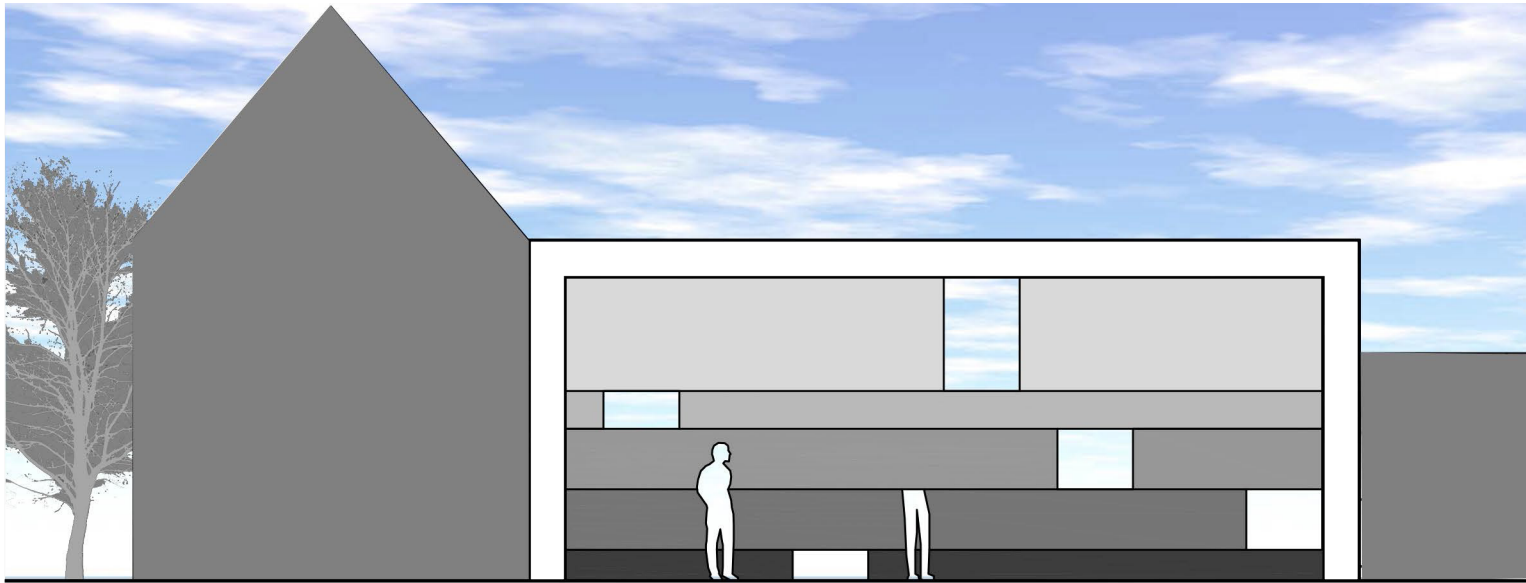
The second obstruction is a beam 0,7m wide and 0,8 high. It is placed at 1,2m, a good height to lean. The third blocks your line of sight with a beam of 0,1m x 0,8 m height. Having passed the third, you cross a low beam right above your head.

The view differs from both sides. Depending on where a person stands he can be visible, half hidden or invisible to the viewer. From the outside one can see how high and deep the entrance is, but is unable to see past it. From the inside the height of the entrance looks lower by a beam.

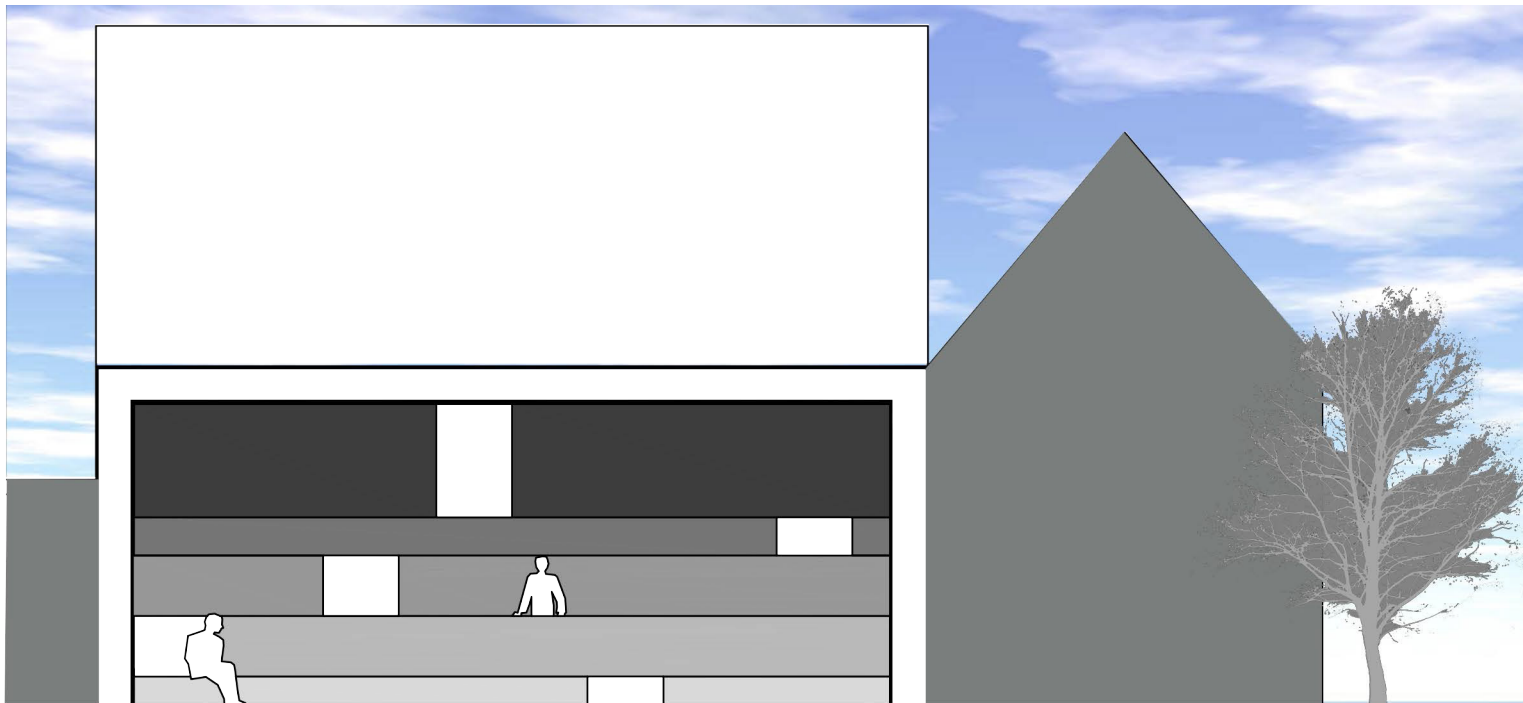
A threshold is a boundary but not in form of a line, it's a feeling. A feeling when taking a step. A step of sin, uncertainty or confidence.

## THRESHOLD

---



View from the inside 1/100



View from the outside 1/100

## A MOMENT BETWEEN U & I

---

Just like in a facade, there are some small windows wo give a view to the inside. These windows are a one meter wide opening cut out from the beams and serve as walk-trough openings.

A threshold is a boundary but not in form of a line, it's a feeling. A feeling when taking a step. A step of sin, uncertainty or confidence.

TK12 - Learning activity 73  
OIKONET elective 2014  
Faculty of Architecture - KU Leuven  
[www.oikonet.org](http://www.oikonet.org) - [www.twitter.com/ThresholdMatters](http://www.twitter.com/ThresholdMatters)

Lieselotte Van Assche



---

A threshold is a boundary but not in form of a line, it's a feeling. A feeling when taking a step. A step of sin, uncertainty or confidence.

---

TK12 - Learning activity 73  
OIKONET elective 2014  
Faculty of Architecture - KU Leuven  
[www.oikonet.org](http://www.oikonet.org) - [www.twitter.com](http://www.twitter.com)  
ThresholdMatters

---