

04



*In order to make a city more livable and help the people come out of their cocoon, we must expand the boundaries.*  
#Softedges

The theoretical abstract context is an residential area.

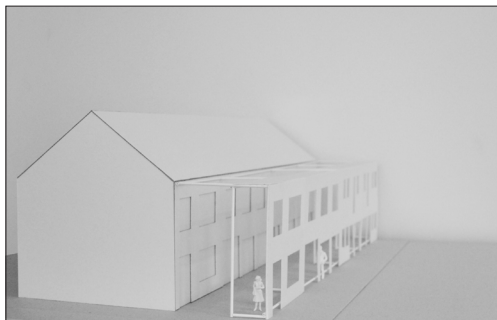
"The second skin" is used as a methaphore to expand the hard edge of a façade. A new space is created.

The innerspace can be devided in two overlapping areas, an open and covered area. They're offered as a path that can be used as an all-round space: for reading, chatting, walking, playing,....

The frame highlights the connection between the houses and has the purpose to encourage social contact. Doors and windows can be soft edges but they're closed most of the time (or covered). The skin made them permanent soft edges.

The intention is to pull the people out of the houses and make the front yard a more interactive space. In reality a front yard is rarely used, people 'hide' in the back yard. The soft edge can provide a better opportunity for staying in the public space.

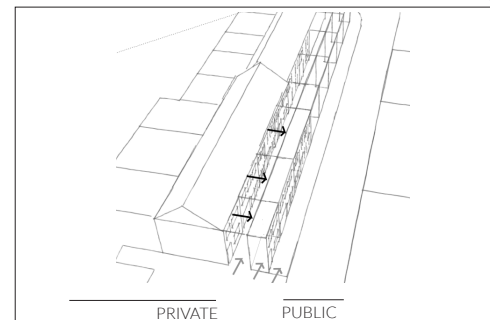
01



02



03



TK12 - Learning activity 73

**OIKONET elective 2014**

Faculty of Architecture - KU Leuven

[www.oikonet.org](http://www.oikonet.org) - [www.twitter.com](https://twitter.com)

**ThresholdMatters**

Vervaeet Jana