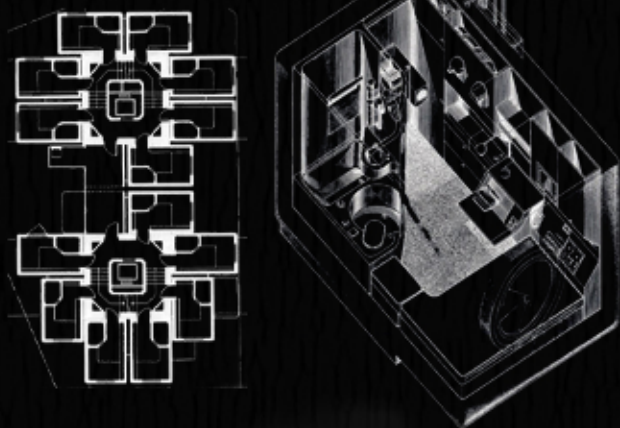


INDUSTRIALISATION

in housing

- Increases labor productivity
- Replaces manual labor for machines
- Accelerates the pace of construction
- Reduces costs
- Improves quality

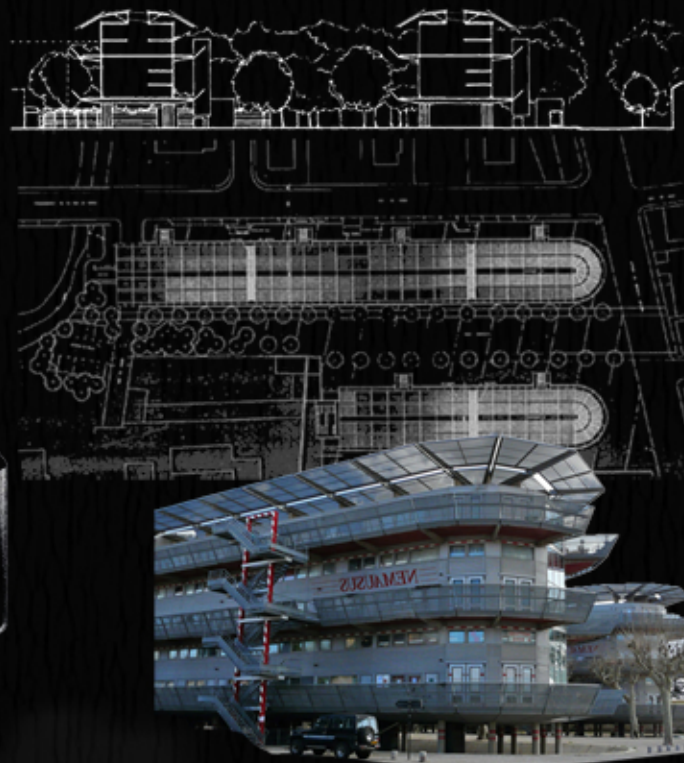


Nagakin Capsule Tower
Kurokawa Kisho
Tokyo - Japan _ 1972

The tower is a prime example of Kisho's Metabolism architecture movement that focused on adaptable, growing, and interchangeable building designs.

The capsules were **manufactured in a factory** in Shiga Prefecture and **transported** to Tokyo by truck. They were then **attached** to the tower's central beam.

The capsules were designed to be **removable** and **replaceable** from the central beam. Even the seemingly small space inside the capsules can be **modified** (it can be increased by connecting capsules to other capsules).

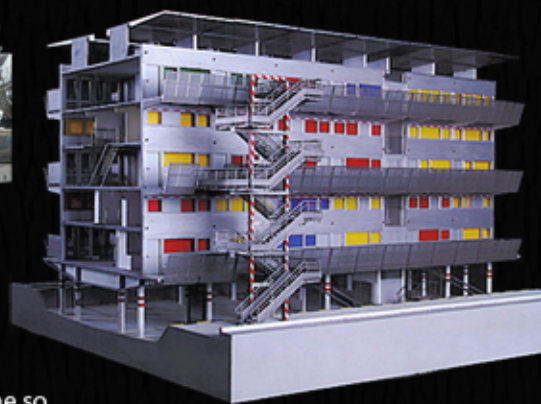


Nemausus
Jean Nouvel
Nimes - France _ 1987

The Nemausus social housing project has become so well known that it is difficult to put its radical qualities into proper perspective.

The use of **industrial materials** (concertina garage doors for balconies, metalwork decking, aluminum open stairs) is indeed radical, but does not derive from any intention to shock or to be radical for its own sake.

Almost all the construction progress, except the main structure, was based on the **assembly of prefabricated elements**.



≠ CRAFTSMANSHIP
(Traditional construction)

less TIME MONEY

Main trend of **scientific** and **technical progress** in construction.

Investigation and **integration** of those **technologies, materials** and **products** habitually used in other **sectors in increasing development**.

Development and **improvement** of construction work on the basis of **mechanization** and **automation**.

Conversion of PRODUCTION

Industrialisation is in essence an organisational process

Sir Norman Foster

CONTINUOUSLY FLOWING & MECHANIZED PROCESS

Extensive use of **PREFABRICATED ELEMENTS**.

FACTORY-FINISHED LARGE-SIZED

Assembly & Installation of Buildings & Structures made of Prefabricated setups & Parts

www.iaarc.org
www.cibworld.nl

Jill Herbers. Prefab modern. 2004

M. Gausa: Housing.Nuevas alternativas.Nuevos sistemas. 2002

R. Rogers. Industrialized building systems: reproduction before automation and robotics. 2005

Hillary French: Key Urban Housing of the Twentieth Century. Plans, Sections and Elevations. 2008